

Kemutec KEK K300C Centrifugal Sifter



- Hinged oversized door for easy cleaning and operation
- Quiet vibration free operation
- Fully rotatable screen for inspection and cleaning
- Bolted flanges for dust tight operation
- Tool free removal of sifting screen, screen retainer and paddle/blade assembly
- Flexible design reduces floor space and meets every processing requirement
- No oversize end bearing or seals for fewer moving parts to wear or replace
- Hygienic design
- Screen changes in less than 30 seconds

Features

Cantilever designed Kemutec KEK Centrifugal Sifter comes from a long line of proven sifting equipment. The easy to clean and tool free design allows for maximum output and uptime. Its oversize hinged door provides quick access to the hygienically designed sifting screens. The Kemutec KEK Centrifugal Sifter is ideal for the Food, Pharmaceutical, and Chemical Industries.

Process

- Scalping to remove oversize particles
- Policing to remove foreign particles and objects
- Size classification
- De-lumping and de-agglomeration
- Liquid straining

Kemutec KEK K300C Centrifugal Sifter

Equipment

Kemutec KEK K300C Centrifugal Sifter

Material of construction

Stainless steel, carbon steel

Design

Gravity and inline pneumatic conveying

Options

- Drive arrangement
- ATEX compliant execution available
- Pressure rated design
- Gas inerting
- CIP capability
- Screen protection or trash traps
- High containment machines
- Dust-tight connections

Body type: One piece complete with fines outlet and integral oversize end. A hinged and interlocked inspection door fitted to right-hand side of body. Grounding connections fitted at inlet and outlet for continuity.

Inlet/outlet connections: Flanged connections on the inlet and outlet – see drawing for details.

Oversize end connection: Tri-clover type ferrule and safety grid – see drawing for details.

Oversize end door: Fitted with a hinged and interlocked door.

Motor specification: 0.75 hp metric frame, 3 phase, 60 Hz motor non-hazardous area.

Sifter shaft speed: Via Belt Drive – 1000 rpm. Shaft rotation – counterclockwise viewed from oversize end.

Shaft/bearing type: Cantilever shaft supported at inlet end only by a pair of heavy duty sealed for life flanged ball bearing units fixed to drive support housing/bracket.

Shaft seal: At inlet end only. Twin nitrile rubber lip seals mounted in a bolted seal housing complete with air purge connection between seals. Air-purge is pre-piped from seal to a bulkhead fitting on the housing to accept 1/4" (6 mm) O.D. nylon tube.

Air/gas purge requirement: The air purge facility requires compressed air/gas from a clean dry supply, regulated between 0.35 - 1 barg (5 to 14.5 psig). Usage rate is approx. 7 ft³/min at 0.5 barg / 7.5 psig.

Gasket: All gaskets are FDA approved white food quality rubber.

Infeed scroll type: Standard AL type requires a controlled feed of product. Rate-limiting scrolls available as an option.

Kemutec KEK K300C

Centrifugal Sifter

Shaft paddle: 3 blade all welded with 3 degree forward pitch. Fitted with intra-baffle

Paddle wiper/brushes: 3-off adjustable bolted wiper blades fitted to paddle blades

Sieve basket retainer & oversize baffle: A combined sieve basket retainer with screw adjustable baffle plate to allow adjustment to material flow to oversize

Sieve mesh area: 0.93 ft² = 0.086 m²

Sieve basket: To suit CE/1 nylon or woven wire mesh types as standard.

Sieve meshes: Woven nylon or wire mesh as standard. Options of wedge wire and perforated plate are offered

Safety interlocks:

- A. Fitted to side access door as standard: Allen Bradley plunger limit switch, IP65, 1 pair NO + 1 pair NC contacts, M20 conduit thread entry
- B. Fitted to oversize end as standard: Allen Bradley plunger limit switch, IP65, 1 pair NO + 1 pair NC contacts, M20 conduit thread entry

Maximum temperatures:

Nylon meshes	+176 °F	+80 °C
Silicone gasket	+392 °F	+200 °C
Nitrile shaft seal	+176 °F	+80 °C
PTFE shaft seals	+392 °F	+200 °C
Flanged bearing units	+212 °F	+100 °C

Operating pressure: 0.8 barg - 1.1 barg (+/- 0.5 psig)

Altitude: Maximum 1000 m above sea level (due to motor cooling). High altitude – based on application

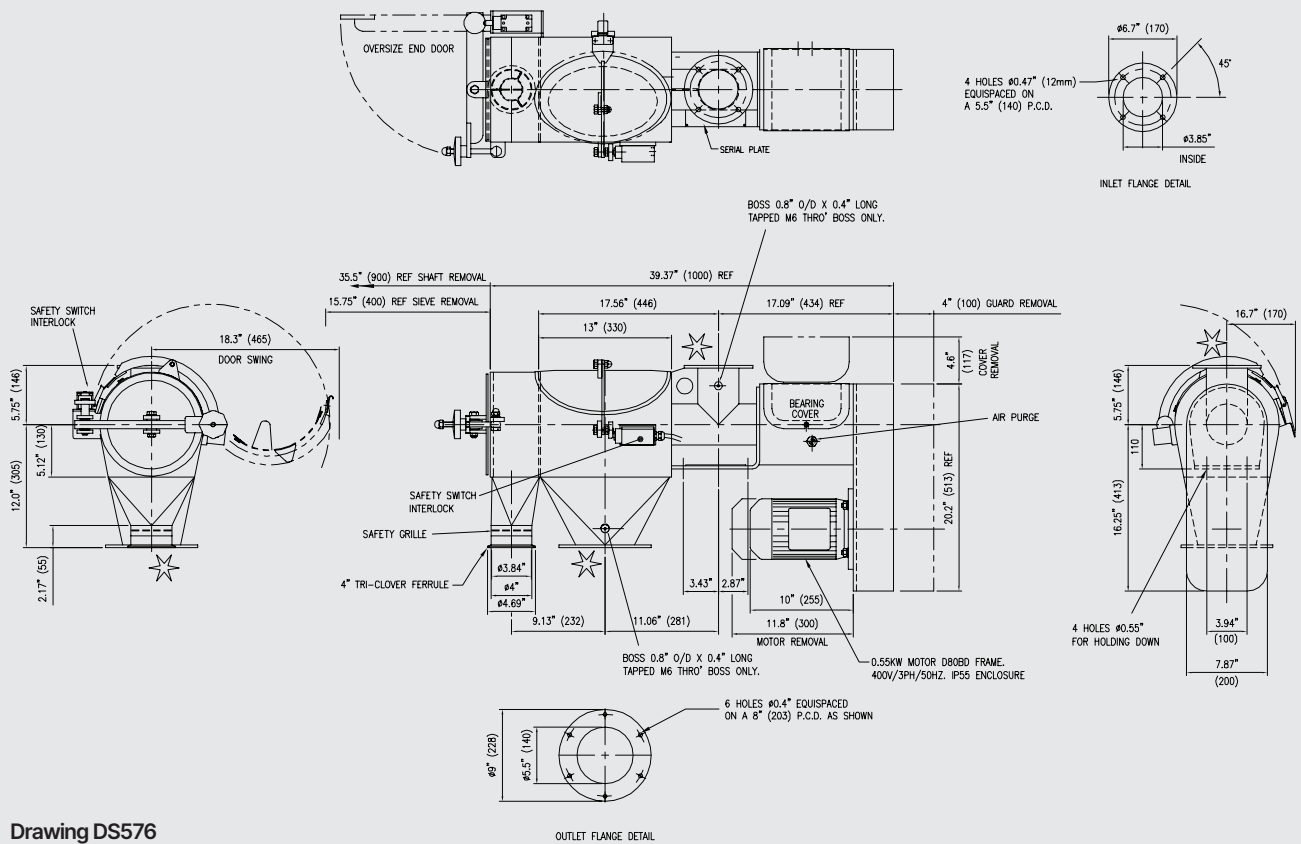
Additional options available upon request:

- Rate-limiting infeed scrolls in place of a standard scroll
- Stainless steel drive support and guard instead of painted carbon steel items
- Left-hand body inspection door instead of standard right-hand version
- PTFE shaft lip seals
- Hazardous area drive motor and door interlocks
- Zero or reverse pitch paddle assemblies
- Oversize collection canisters
- Polyester / PFK / anti-static polymer meshes
- All welded one piece shaft / scroll / paddle assembly
- Mobile support stand
- ATEX zone 20 internally and zone 21 externally T135 °C

Alternative machine types:

Cut-off Fines Outlet – request drawing DS489

Kemutec KEK K300C Centrifugal Sifter



Drawing DS576